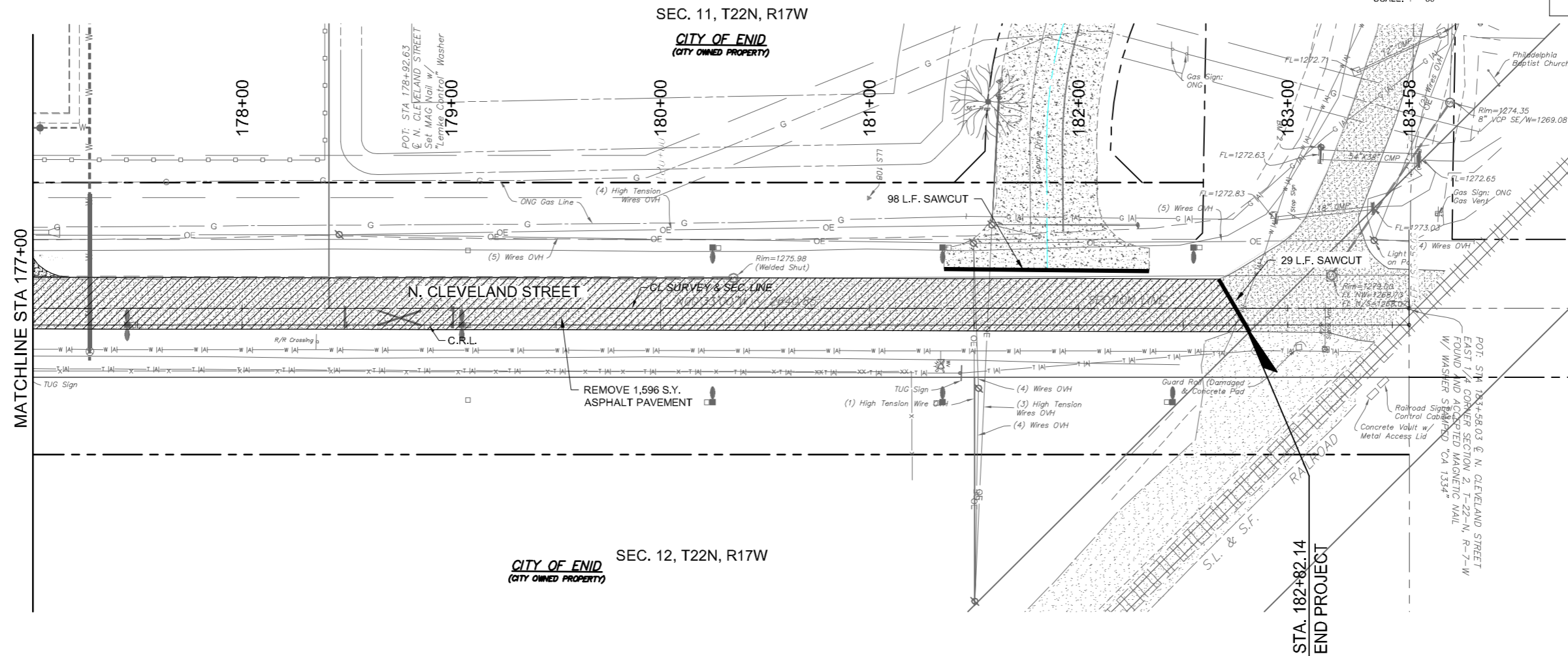
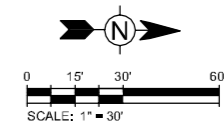


FED. ROAD DIST. NO.	STATE	STATE JOB NO.	FISCAL YEAR	SHEET NO.	TOTAL SHEETS
4	OKLA	17020(07)		28	
DESCRIPTION			REVISIONS	DATE	



**REMOVAL LEGEND**

	ASPHALT PAVEMENT = 1,596 S.Y.
	CONCRETE DRIVE = 0 S.Y.
	ASPHALT DRIVE = 0 S.Y.
	GRAVEL DRIVE = 0 S.Y.
	SAWCUT = 127 L.F.

DESIGN	MVS
DRAWN	CWT
CHECKED	JDH
APPROVED	JDH
SQUAD	Tt

**N. CLEVELAND STREET**

OKLAHOMA DEPARTMENT OF TRANSPORTATION

**REMOVAL PLAN**

**STA. 177+00 TO STA. 182+82.14**

STATE JOB NO. 17020(07) SHEET NO. 28

CITY PROJECT R-1311B GARFIELD COUNTY

4/18/2017 2:23:11 PM - P:\2771\21\31\27712-300\CAD\SHEETFILES\CLEVE BLVD PLANS\REMOVAL PLAN.DWG - SCHUMACHER, MIKE